

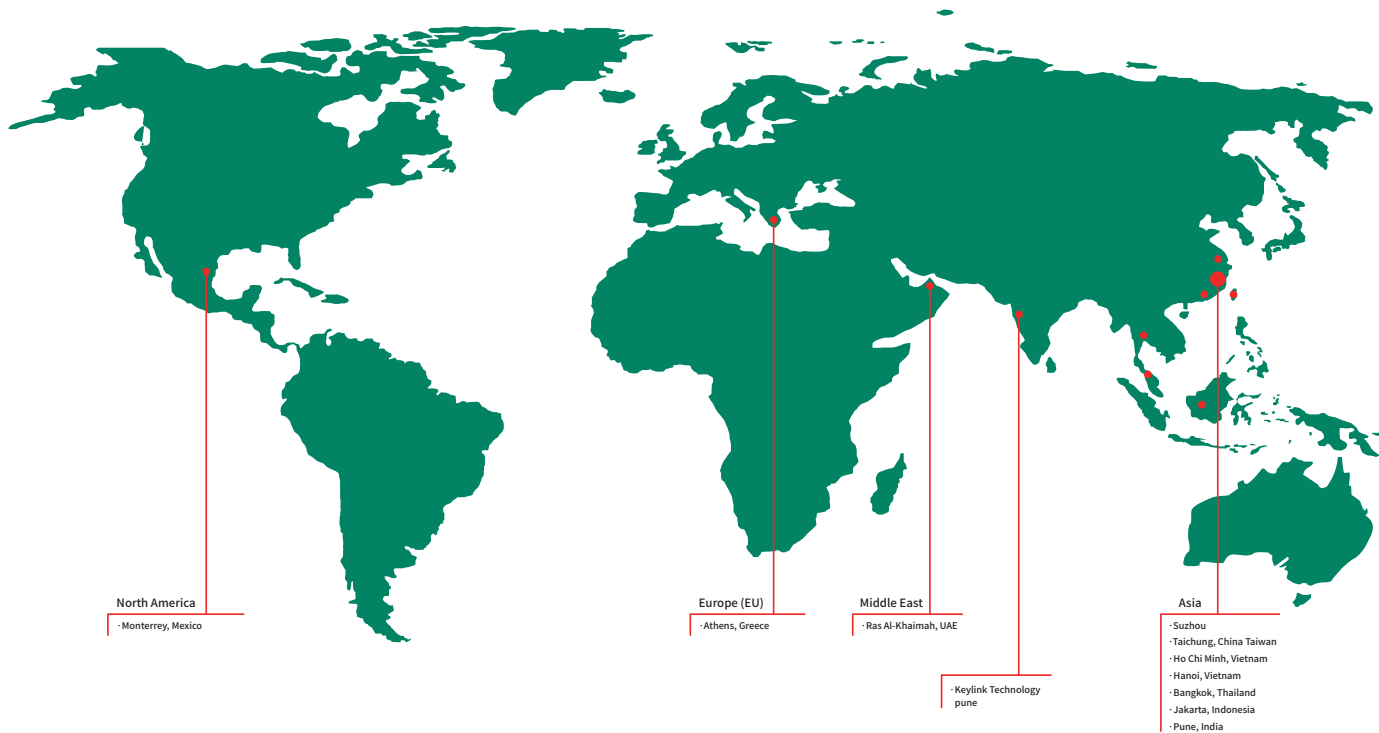


Keylink Technology India Pvt.Ltd.

Address: Ground floor,Plot No.9B, Sr.No.92,Sanket Park,
Mohammad wadi Road,
Hadapsar, Pune 411028
Maharashtra India
Tel: +91 8010632552
E-mail: info@keylinktech.in

**PLASMA SURFACE
TREATMENT SYSTEMS**

International Sales and Services



Our Values

We understand that excellent products and services are the foundation of a long-term customer relationship, and that leading in technology and innovation build sustainable strength. Our core value is trust with our employees and our customers.

Mission

To ensure our customer success by providing customer-driven, innovative, and quality treatment solutions, efficiently, with competitive pricing and long-term consistent value.



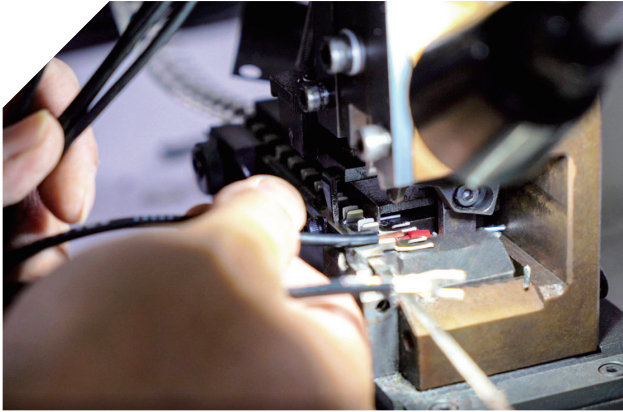
COMPANY PROFILE

KEYLINK TECHNOLOGY is an innovative and customer-driven company with R&D, Manufacturing and Sales of surface treatment systems and solutions as its core business.

Since more than 10 years KEYLINK TECHNOLOGY is focusing on solutions to improve the surface adhesion and wettability of various materials for printing, bonding, spraying and many other applications.

KEYLINK TECHNOLOGY has served hundreds of domestic and international well-known enterprises with thousands of different products used in the printing, automotive, aerospace, 3C electronic, optoelectronic, medical, and other industries. Our surface pre-treatment solutions and systems are applied in more than 5000 application scenarios. With our plasma processes, we can replace traditional processes and reduce the CO2 footprint in the production process significantly.

We are committed to follow the international standards as ISO, CE as well following the environmental compliance.



What is Plasma?

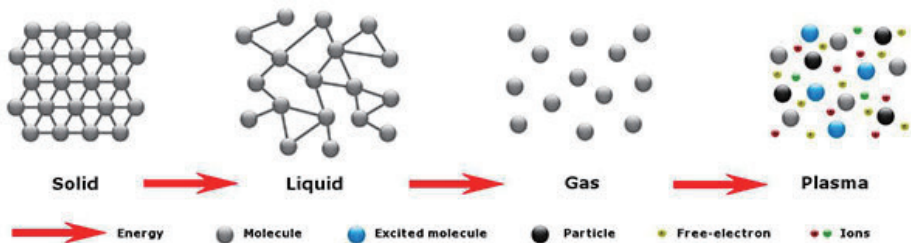
Plasma is a form of matter in which many of the electrons wander around freely among the nuclei of the atoms. Plasma has been called the fourth state of matter, the other three being solid, liquid and gas.

Normally, the electrons in a solid, liquid, or gaseous sample of matter stay with the same atomic nucleus. In a plasma, a significant number of electrons have such high energy levels that no nucleus can hold them.

An atom that has lost some of its electrons, thereby attaining an electric charge, is an ion. When a gas is subjected to heat or an electric field some of its atoms become ions, and the gas is said to be ionized. An ionized gas, unlike a gas in its normal condition, can conduct electrical current to a limited extent. If the heat or electric field becomes extreme, many of the atoms become ions.

The resulting super-ionized gas is a plasma, which can conduct a large and sustained electric current.

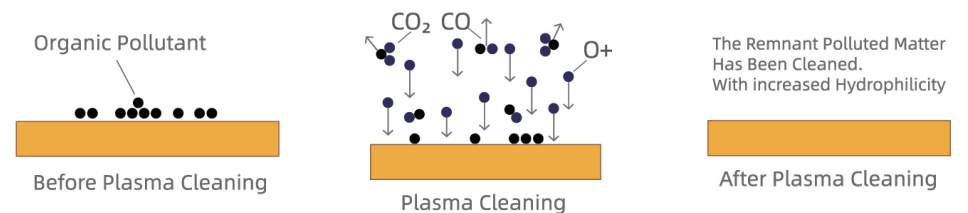
The behavior and properties of plasmas have aroused interest and creative work among scientists and engineers. Applications include electric lamps, lasers, medical devices, energy converters, water purifiers, flat-panel video displays and as well it is used for surface treatment of nearly all kind of materials. About 99% of the visible universe is formed of plasma.



Research Development & Innovation

With many years' experiences in plasma technology, an enthusiasm for innovation and customer-orientation, we develop the technology of our products. We focus on delivering function, reliability, efficiency, and economical solutions for our customers.

In this way we set the trend of modern and environmentally friendly surface cleaning and activation with plasma technology.



Applications and Solutions

Activation

Plasma activation is the process of cleaning and activating a surface as a pre-treatment before applying an adhesive, coating or spraying.

Keylink Plasma Surface Treatment Systems improves its adhesion properties and is an optimal way to improve the strength of the chemical bond between the base material and the adhesive, coating or spraying.

Adhesion Improvement

Improving Bonding

Pre-treatment with Keylink Plasma Surface Treatment Systems increase the adhesion between an adhesive and a base material. It increases the peel and shear in the joint between the adhesive and the base material.

Improving Painting

Plasma pre-treatment of base materials to optimize paint adhesion is an excellent way of plasma activation. Increasing the adhesion between a material with low surface energy and a paint without the use of a primer or adhesion promoters is a significant and an environmentally friendly improvement in the manufacturing strategy.

Cleaning

Plasma cleaning technology by using Keylink Plasma Surface Treatment Systems offers solutions for any type of contamination for any substrate. In the cleaning process microscopic contaminations will be removed from a surface by a dry method of turning the foreign particles into a gas. Nearly all materials can be treated. Plastics, metals, rubbers, ceramics or glass are suitable for plasma cleaning. It is an economical, safer, environmentally friendly and more efficient process in comparison to the traditional chemical cleaning method.

Etching

Using plasma technology for etching is an optimal treatment removing material from a polymer substrate, metal, oxide, glass or ceramic. There are various advantages to using plasma instead of traditional removal methods, such as chemical etching or mechanical abrasion. With plasma materials can be removed with high accuracy without any damage of the underlying substrate.

Varnishing

Many products, parts or components are made of materials such as metals, glass, ceramics etc., whose surfaces are very difficult to varnish. Using plasma pre-treatment before varnishing it will clean and operationalize such materials. As a result, many materials with typical non-stick surfaces can be coated or varnished successfully.

Wettability Improvement

If a substrate has a low surface energy, its wettability is poor and adhesion very scarce, and then needs a surface treatment to increase energy. Plasma technology as an economical and environmentally friendly treatment offers a wide range of opportunities for improving the wettability. Plasma cleaning removes all layers of grease, wax or oil without leaving a trace and increase the wettability significantly.

Printing & Label Application

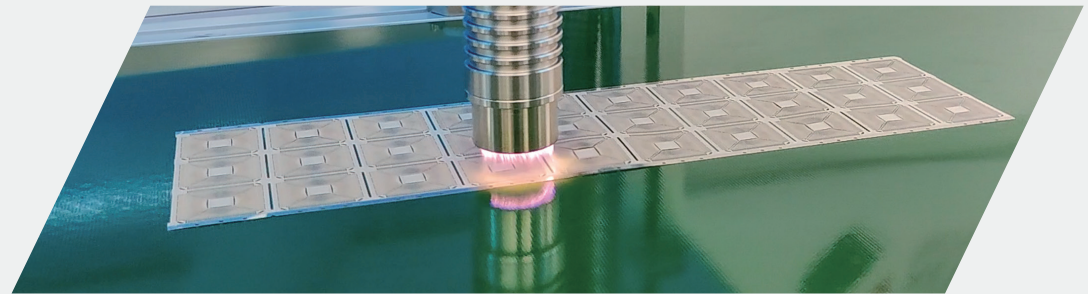
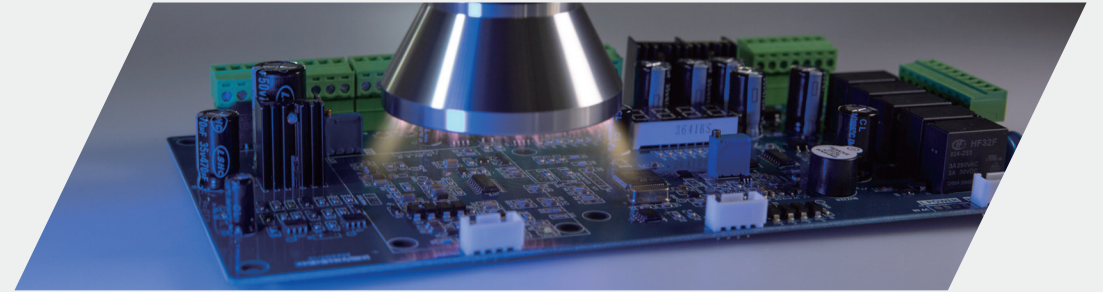
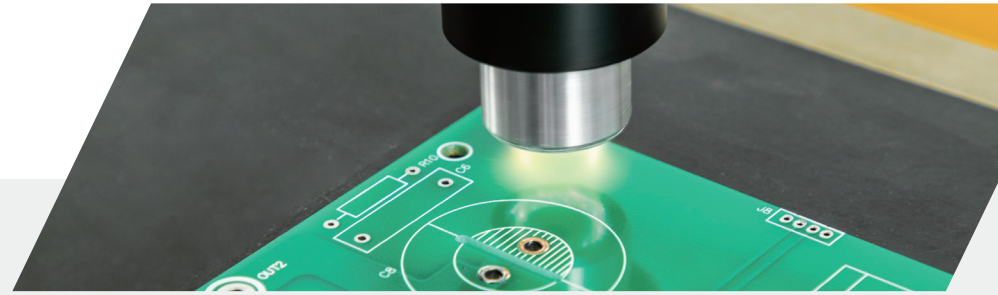
One of the key parameters determining the quality of the print is the adhesion of the ink to the substrate. Without good adhesion, it is impossible to obtain a high-quality print. Pre-treatment for printing using plasma technology improve the surface adhesion significantly, resulting in a high-quality print. Nearly all materials such as metals, ceramics, glass, polymers or textiles can be pre-processed with plasma technology to increase the surface energy and improve the surface adhesion outstandingly.

ELECTRONIC

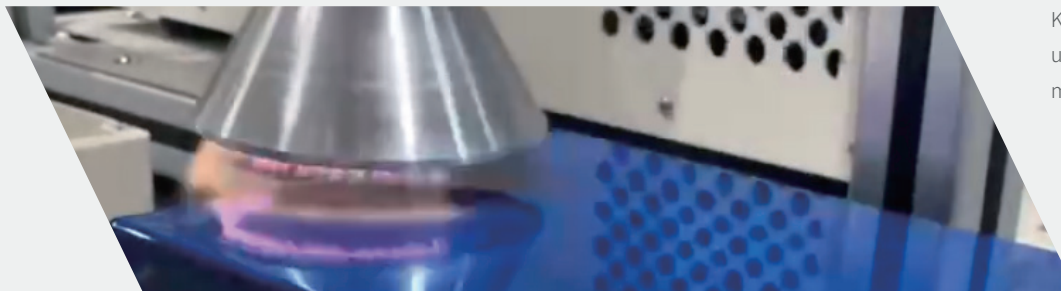
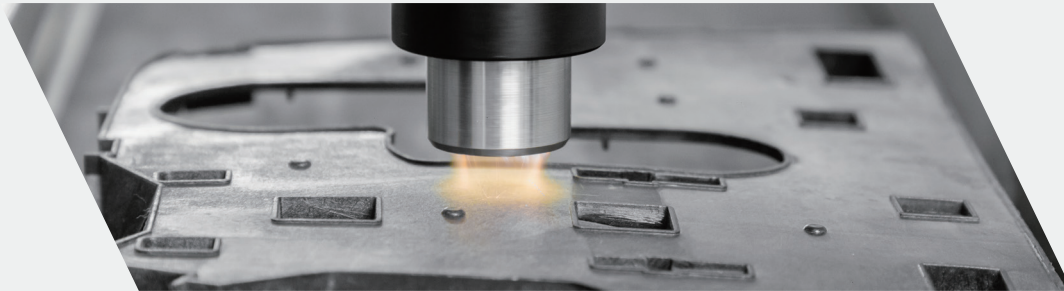
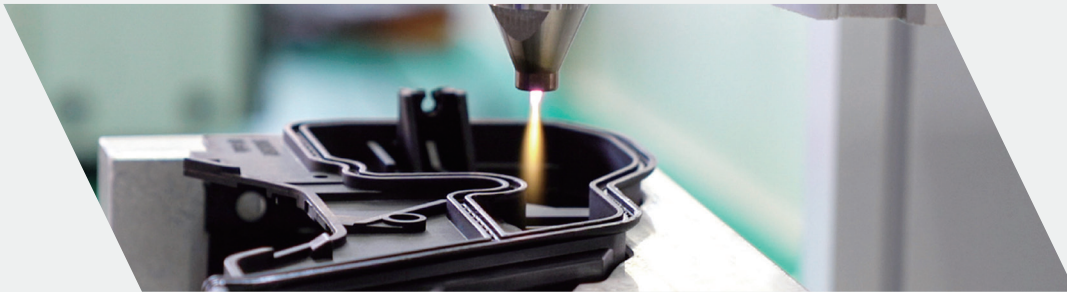
In the electronics industry, plasma pretreatment is a key asset for achieving cost-effectiveness and process reliability. For transparent, scratch-proof coating of displays, it significantly reduces the reject rate and ensures a flawless appearance. Printing electrically conductive coatings on printed circuit boards, prior plasma activation, micro fine cleaning and electrostatic discharge ensure that the coating will adhere securely. Modern touch screens, LCD displays, smart phones and TV screens make high demands on production processes as the plastic parts must be provided with highly transparent scratch-proof and anti-static coatings before they are bonded.

Keylink Plasma Surface Treatment Systems improves its adhesion properties and is an optimal way to improve the strength of the chemical bond between the base material and the adhesive, coating or spraying.

Keylink Plasma Surface Treatment Systems are suitable for high-volume manufacturing applications, are durable, cost-effective, environmentally friendly, and can be integrated in the existing process easily.



AUTOMOTIVE



Atmospheric pressure plasma technology is getting more and more important in the automotive industry and proving itself suitable for generating surfaces micro-fine clean for optimal finishing results, creating perfect adhesion, as well as increase the strength of the bond between the base material and the adhesive. From automotive exterior-functional composite materials as well as headlights, windshields to interior parts with complex structures such as dashboards, doors etc., plasma technology is the optimal pre-treatment solution.

Keylink Plasma Surface Treatment Systems improves its adhesion properties and is an optimal way to improve the strength of the chemical bond between the base material and the adhesive, coating or spraying.

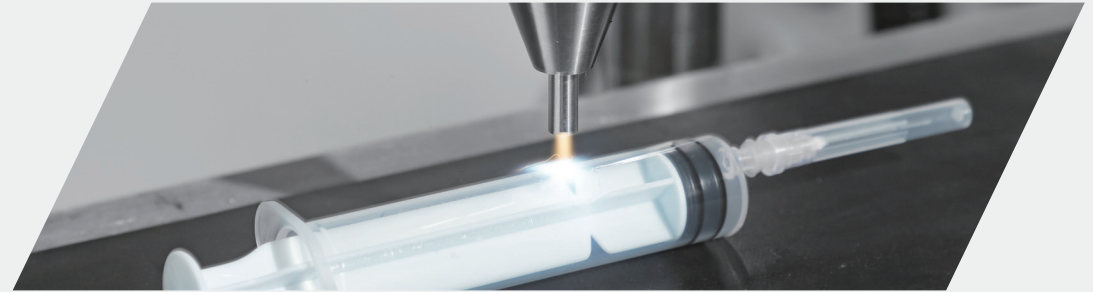
Keylink Plasma Surface Treatment Systems are suitable for high-volume manufacturing applications, are durable, cost-effective, environmentally friendly, and can be integrated in the existing process easily.

MEDICAL

Many devices and equipment used in medical industry require good adhesion to operate properly and ensure accuracy when producing medication, including catheters, hubs, and syringes. Additionally, Plasma Treatment makes intra-ocular lenses hydrophilic, and effectively cleans many medical implants.

Keylink Plasma Surface Treatment Systems improve the surface adhesion and the wettability significantly, as well as increase the strength of the bond between the base material and the adhesive.

Keylink Plasma Surface Treatment Systems are suitable for high-volume manufacturing applications, are durable, cost-effective, environmentally friendly, and can be integrated in the existing process easily.



CONSUMER GOODS



Nowadays modern customers have much higher expectations, such as reliable products, proactive service, personalized interactions, and connected experiences across digital channels.

Applications using new advanced materials, non-toxic based inks, high-quality prints, sustainable packaging etc. require a pre-treatment based on their low surface energy in the production process, to increase their surface adhesion and wettability, and finally to improve the quality of the finished and/or packed product.

Keylink Plasma Surface Treatment Systems improve the surface adhesion significantly, resulting in high-quality print, coating or spraying, and increase the strength of the bond between the base material and the adhesive.

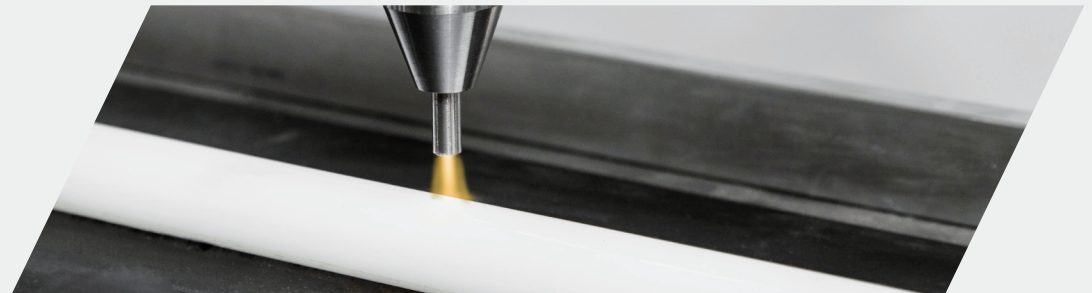
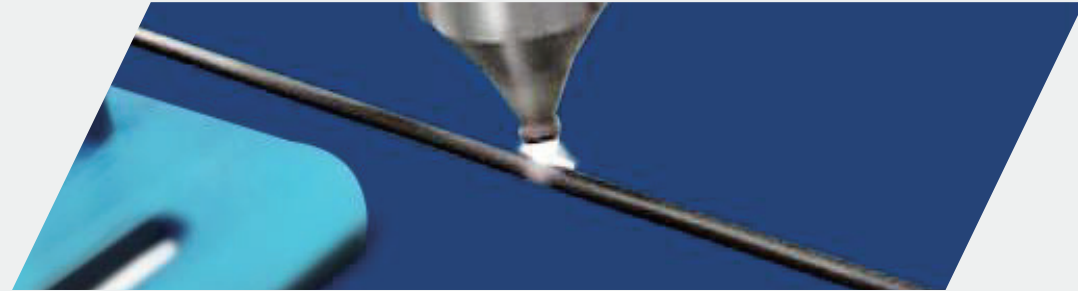
Keylink Plasma Surface Treatment Systems are suitable for high-volume manufacturing applications, are durable, cost-effective, environmentally friendly, and can be integrated in the existing process easily.

WIRE & CABLE

Materials with low surface energy such as PE, PVC, PP, PTFE, XLPE, EPDM, Silicone and other materials are difficult to be bonded with inks, sprayed or coated. Plasma pre-treatment of base materials to optimize paint or print adhesion is an excellent way of plasma activation. Increasing the adhesion between a material with low surface energy and a paint or print without the use of a primer or adhesion promoters is a significant and an environmentally friendly improvement in the manufacturing strategy.

Keylink Plasma Surface Treatment Systems improve the surface adhesion significantly, resulting in high-quality print, and increase the strength of the bond between the base material and the adhesive.

Keylink Plasma Surface Treatment Systems are suitable for high-volume manufacturing applications, are durable, cost-effective, environmentally friendly, and can be integrated in the existing process easily.



PRINTING

One of the key parameters determining the quality of the print is the adhesion of the ink to the substrate. Without good adhesion, it is impossible to obtain a high-quality print. Pre-treatment for printing using plasma technology improve the surface adhesion significantly, resulting in a high-quality print. Nearly all materials such as metals, ceramics, glass, polymers or textiles can be pre-processed with plasma technology to increase the surface energy and improve the surface adhesion outstandingly.

Keylink Plasma Surface Treatment Systems improve the surface adhesion significantly, resulting in high-quality print, and increase the strength of the bond between the base material and the adhesive.

Keylink Plasma Surface Treatment Systems are suitable for high-volume manufacturing applications, are durable, cost-effective, environmentally friendly, and can be integrated in the existing process easily.



The trend in the packaging industry is adopting smart and sustainable solutions to make product packing more consumer-, brand-, and environmentally friendly. Smart packaging leverages technology will be more and more implemented such as QR codes, smart labels, RFID, and NFC chips. Beside of this the packaging industry take on circular packaging solutions using biodegradable and recyclable materials.

Based on the requirements of high-quality printing, labelling and the combination of different materials a pre-treatment process is necessary to ensuring the optimal surface adhesion and wettability.

Keylink Plasma Surface Treatment Systems improve the surface adhesion significantly, resulting in high-quality print, and increase the strength of the bond between the base material and the adhesive.

Keylink Plasma Surface Treatment Systems are suitable for high-volume manufacturing applications, are durable, cost-effective, environmentally friendly, and can be integrated in the existing process easily.



PACKAGING



PL-5010-OUT



PL-5010P-OUT



PL-5050



PL-5050P



PL-6050P-S



VL-80A

KEYLINK TECHNOLOGY PLASMA SYSTEMS



PL-5010-IN



PL-5020-IN (OUT)



PL-5050-2



PL-5030



VL-10A

▶ TECHNICAL PARAMETERS

Input Voltage	AC220V (±10%)
Plasma Output Power	1000VA
Input Current	4.0—6.0A
Power Frequency	20kHz
Air Requirements	Dry, oil-free compressed air (50L/min) is required
Display Air Pressure	0.1-0.25MPa
Control Mode	Signal mode & Encoder mode
Relative Humidity	<93% (no condensation)
Storage Ambient Temperature	-25°C—+55°C
Cleaning Height	5-15mm
Treating Width	≤13mm
Brackets	Universal micro-adjustment bracket, slide micro-adjustment bracket (optional)
Dimension	580 (L) *350 (W) * 320 (H) mm
Net Weight	19kg
Outer Box Size	640 (L) *395 (W) * 475 (H) mm
Gross Weight	26kg
Detection Function	Air pressure detection, transformer primary current detection Grid current detection, IGBT temperature detection
Failure Alarms	Plasma power supply failure alarm Alarm for unstable air pressure (high and low pressure alarms) real-time power detection alarms

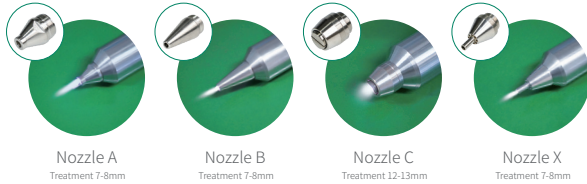
▶ NOZZLE TYPE AND ITS TIP FLAME



PL-5010-OUT

▶ Plasma Surface Treatment System

▶ NOZZLE TYPE AND ITS TIP FLAME



Nozzle A
Treatment 7-8mm

Nozzle B
Treatment 7-9mm

Nozzle C
Treatment 12-13mm

Nozzle X
Treatment 7-8mm



PL-5010P-OUT

Plasma Surface Treatment System

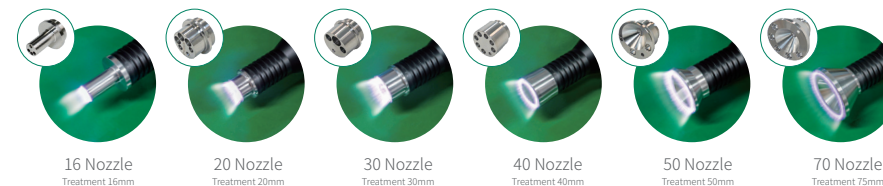
▶ TECHNICAL PARAMETERS

Input Voltage	AC220V (±10%)
Plasma Output Power	1500VA (Adjustable 750-1500VA)
Input Current	5.5—8.0A
Power Frequency	17-30kHz
Air Requirements	Dry, oil-free compressed air (50L/min) is required
Display Air Pressure	0.1-0.3MPa
Control Mode	Signal mode & Encoder mode
Relative Humidity	<93% (no condensation)
Storage Ambient Temperature	-25°C—+55°C
Cleaning Height	5-15mm
Treating Width	≤13mm
Brackets	Universal micro-adjustment bracket, slide micro-adjustment bracket (optional)
Dimension	595 (L) *350 (W) *365 (H) mm
Net Weight	25kg
Outer Box Size	660 (L) *395 (W) *530 (H) mm
Gross Weight	35kg
Detection Function	Air pressure detection, transformer primary current detection, grid current detection, IGBT temperature detection, abnormal alarm output signal detection
Failure Alarms	Plasma power supply failure alarm, Alarm for unstable air pressure (high and low pressure alarms), real-time power detection alarms

◆ TECHNICAL PARAMETERS

Input Voltage	AC220V (±10%)
Plasma Output Power	1000VA
Input Current	4.0—6.0A
Power Frequency	20kHz
Air Requirements	Dry, oil-free compressed air (60L/min) is required
Display Air Pressure	0.1-0.25MPa
Control Mode	Signal mode & Encoder mode
Relative Humidity	<93% (no condensation)
Storage Ambient Temperature	-25°C—+55°C
Cleaning Height	5-15mm
Treating Width	≤75mm
Brackets	Universal micro-adjustment bracket, slide micro-adjustment bracket (optional)
Dimension	580 (L) *350 (W) *320 (H) mm
Net Weight	22kg
Outer Box Size	640 (L) *395 (W) *475 (H) mm
Gross Weight	30kg
Detection Function	Air pressure detection, transformer primary current detection Grid current detection, IGBT temperature detection
Failure Alarms	Plasma power supply failure alarm Alarm for unstable air pressure (high and low pressure alarms) real-time power detection alarms

◆ NOZZLE TYPE AND ITS TIP FLAME



PL-5050

Plasma Surface Treatment System

▶ NOZZLE TYPE AND ITS TIP FLAME



PL-5050P

Plasma Surface Treatment System

▶ TECHNICAL PARAMETERS

Input Voltage	AC220V (±10%)
Plasma Output Power	1500W (adjustable 750-1500W)
Input Current	4.0—8.0A
Power Frequency	17.3-30kHz
Air Requirements	Dry, oil-free compressed air (60L/min) is required
Display Air Pressure	0.1-0.3MPa
Control Mode	Manual mode, Signal mode & Encoder mode
Relative Humidity	<93% (no condensation)
Storage Ambient Temperature	-25°C—+55°C
Cleaning Height	5-15mm
Treating Width	≤110mm
Brackets	Universal micro-adjustment bracket, slide micro-adjustment bracket (optional)
Dimension	595 (L) *350 (W) *365 (H) mm
Net Weight	28kg
Outer Box Size	660 (L) *395 (W) *530 (H) mm
Gross Weight	37kg
Detection Function	Air pressure detection, transformer primary current detection, grid current detection, IGBT temperature detection, abnormal alarm output signal detection
Failure Alarms	Plasma power supply failure alarm, use of air pressure instability alarm (high and low pressure alarm), Rotary motor failure alarm, real-time power detection alarm

▶ TECHNICAL PARAMETERS

Input Voltage	AC220V (±10%) 50-60Hz
Plasma Output Power	1500W (adjustable 750-1500W)
Input Current	4.0—8.0A
Power Frequency	17.3-30kHz adjustable
Air Requirements	Dry, oil-free compressed air (60L/min) is required
Display Air Pressure	0.1-0.3MPa
Control Mode	Local control, PLC/IO Signal control, Encoder control
Communication Method	RS-485 communication
Demonstrate	LCD, touchscreen (optional)
Motor Speed	0-3000rpm/min Adjustable motor speed
Temp	40°C (processing speed: 20m/min)
Cleaning Height	5-15mm
Treating Width	≤110mm
Brackets	Universal micro-adjustment bracket slide micro-adjustment bracket (optional)
Dimension	595 (L) *350 (W) *365 (H) mm
Net Weight	28kg
Outer Box Size	660 (L) *395 (W) *530 (H) mm
Gross Weight	37kg
Detection Function	Excitation power supply frequency closed-loop detection air pressure detection, mainboard temperature monitoring Transformer primary current detection, grid current detection IGBT temperature detection, Motor speed real-time detection abnormal alarm output signal detection
Failure Alarms	Short circuit alarm, broken circuit alarm abnormal gas pressure alarm, MainBoard Error Alarm Overload Alarm, Over Temperature Alarm Rotary Motor Failure Alarm

▶ NOZZLE TYPE AND ITS TIP FLAME



PL-6050P-S

Plasma Surface Treatment System

▶ NOZZLE TYPE AND ITS TIP FLAME



PL-5010-IN

Plasma Surface Treatment System

▶ TECHNICAL PARAMETERS

Input Voltage	AC220V (±10%)
Plasma Output Power	1000VA
Input Current	4.0—6.0A
Power Frequency	20kHz
Air Requirements	Built-in air supply
Control Mode	Signal mode & Encoder mode
Relative Humidity	<93% (no condensation)
Storage Ambient Temperature	-25°C—+55°C
Cleaning Height	5-15mm
Treating Width	≤8-10mm
Brackets	Universal micro-adjustment bracket slide micro-adjustment bracket (optional)
Dimension	652 (L) * 400 (W) * 690 (H) mm
Net Weight	40kg
Outer Box Size	690 (L) * 500 (W) * 890 (H) mm
Gross Weight	53kg
Detection Function	Transformer primary current detection Grid current detection, IGBT temperature detection
Failure Alarms	Plasma power failure alarm Real-time power detection alarm

▶ TECHNICAL PARAMETERS

Input Voltage	AC220V (±10%)
Plasma Output Power	2000VA
Input Current	5.0—10.0A
Power Frequency	20kHz
Air Requirements	Built-in air supply
Control Mode	Signal mode & Encoder mode
Relative Humidity	<93% (no condensation)
Storage Ambient Temperature	-25°C—+55°C
Cleaning Height	5-15mm
Treating Width	≤8-10mm*2
Brackets	Universal micro-adjustment bracket slide micro-adjustment bracket (optional)
Dimension	650 (L) *450 (W) *780 (H) mm
Net Weight	58kg
Outer Box Size	690 (L) *590 (W) *1010 (H) mm
Gross Weight	74kg
Detection Function	Transformer primary current detection Grid current detection, IGBT temperature detection
Failure Alarms	Plasma power failure alarm Real-time power detection alarm

▶ NOZZLE TYPE AND ITS TIP FLAME



PL-5020-IN

▶ Plasma Surface Treatment System

▶ NOZZLE TYPE AND ITS TIP FLAME



Nozzle A
Treatment 7-8mm

Nozzle B
Treatment 7-9mm

Nozzle C
Treatment 12-13mm



PL-5020-OUT

Plasma Surface Treatment System

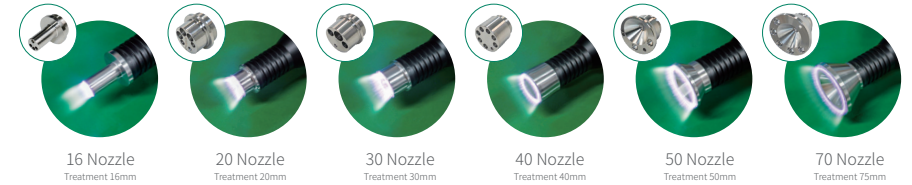
▶ TECHNICAL PARAMETERS

Input Voltage	AC220V (±10%)
Plasma Output Power	2000VA
Input Current	5.0—10.0A
Power Frequency	20kHz
Air Requirements	Dry, oil-free compressed air (100L/min) is required
Display Air Pressure	0.1-0.25MPa (requires two-way gas supply)
Control Mode	Signal mode & Encoder mode
Relative Humidity	<93% (no condensation)
Storage Ambient Temperature	-25°C—+55°C
Cleaning Height	5-15mm
Treating Width	≤13mm*2
Brackets	Universal micro-adjustment bracket, slide micro-adjustment bracket (optional)
Dimension	650 (L) *450 (W) *780 (H) mm
Net Weight	47kg
Outer Box Size	690 (L) *590 (W) *1010 (H) mm
Gross Weight	63kg
Detection Function	Air pressure detection, transformer primary current detection, grid current detection, IGBT temperature detection, abnormal alarm output signal detection
Failure Alarms	Plasma power supply failure alarm, Alarm for unstable air pressure (high and low pressure alarms), real-time power detection alarms

◆ TECHNICAL PARAMETERS

Input Voltage	AC220V (±10%)
Plasma Output Power	2000VA
Input Current	5.0—12.0A
Power Frequency	20kHz
Air Requirements	Dry, oil-free compressed air (120L/min) is required
Display Air Pressure	0.1-0.25MPa (requires two-way gas supply)
Control Mode	Signal mode & Encoder mode
Relative Humidity	<93% (no condensation)
Storage Ambient Temperature	-25°C—+55°C
Cleaning Height	5-15mm
Treating Width	≤75mm*2
Brackets	Universal micro-adjustment bracket, slide micro-adjustment bracket (optional)
Dimension	650 (L) * 450 (W) * 780 (H) mm
Net Weight	55kg
Outer Box Size	690 (L) * 590 (W) * 1010 (H) mm
Gross Weight	70kg
Detection Function	Air pressure detection, transformer primary current detection grid current detection, IGBT temperature detection abnormal alarm output signal detection
Failure Alarms	Plasma power supply failure alarm Alarm for unstable air pressure (high and low pressure alarms) real-time power detection alarms

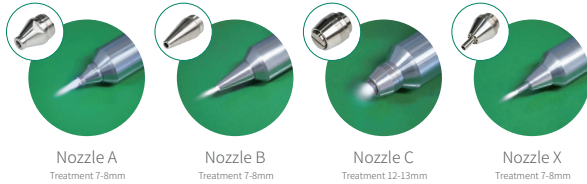
◆ NOZZLE TYPE AND ITS TIP FLAME



PL-5050-2

Plasma Surface Treatment System

▶ NOZZLE TYPE AND ITS TIP FLAME



Nozzle A
Treatment 7-8mm

Nozzle B
Treatment 7-8mm

Nozzle C
Treatment 12-13mm

Nozzle X
Treatment 7-8mm



PL-5030

Plasma Surface Treatment System

▶ TECHNICAL PARAMETERS

Input Voltage	AC220V(±10%)
Plasma Output Power	3000VA
Input Current	5.0—15.0A
Power Frequency	20kHz
Air Requirements	Dry, oil-free compressed air (150L/min) is required
Display Air Pressure	0.1-0.25MPa (three-way gas supply required)
Control Mode	Signal mode & Encoder mode
Relative Humidity	<93% (no condensation)
Storage Ambient Temperature	-25°C—+55°C
Cleaning Height	5-15mm
Treating Width	≤13mm*3
Brackets	Universal micro-adjustment bracket, slide micro-adjustment bracket (optional)
Dimension	840 (L) *450 (W) *780 (H) mm
Net Weight	65kg
Outer Box Size	960 (L) *530 (W) *1010 (H) mm
Gross Weight	87kg
Detection Function	Air pressure detection, transformer primary current detection grid current detection, IGBT temperature detection abnormal alarm output signal detection
Failure Alarms	Plasma power supply failure alarm Alarm for unstable air pressure (high and low pressure alarms) real-time power detection alarms

▶ TECHNICAL PARAMETERS

Input Voltage	AC220V (Optional AC110V)
Output Power	3000VA
Electrodes	2pcs
Electrode Length	600mm
Processing Cable Diameter Range	≤15mm
Processing Speed	0-100m/min
Dimension	1120 (L) *340 (W) *1220 (H) mm
Weight	67kg



CR-4060

▶ Cable Treatment System (Corona Type)



AXIS

Plasma Surface Cleaning Platform (automatic)

▶ TECHNICAL PARAMETERS

Input Voltage	AC220V (Optional AC110V)
Output Power	2000VA
Display Air Pressure	0.1-0.25MPa
Treatment Range	≤110mm
Movements (optional customization)	X-Axis:800mm Y-Axis:500mm Z-Axis:200mm
Dimension	1450 (L) *800 (W) *1550 (H) mm
Weight	100kg

▶ TECHNICAL PARAMETERS

Input Voltage	AC220V (Optional AC110V)
Output Power	2000VA
Display Air Pressure	0.1-0.25MPa
Treatment Range	≤110mm
Stroke (Custpmizable)	X-Axis: 700mm Y-Axis: 400mm Z-Axis: 200mm
Dimension	850 (L) * 1000 (W) * 1700 (H) mm
Weight	100kg



PL-A6150

▶ Plasma Surface Cleaning Platform (automatic)



Smart Plasma Processing System (automatic with Robot Arm)

Robot Systems (customized)

▶ TECHNICAL PARAMETERS

Input Voltage	AC220V (Optional AC110V)
Output Power	2000VA
Display Air Pressure	0.1-0.3MPa
Guns Number (Optional)	1-3pcs
Processing Area Of Each Gun	≤110mm
Conveyor Belt Speed	0-30m/min
Conveyor Belt Width	400mm
Dimension	1120 (W) *340 (H) *1220 (D) mm
Weight	150kg

▶ TECHNICAL PARAMETERS

Input Voltage	AC220V (Optional AC110V)
Output Power	2000VA
Display Air Pressure	0.1-0.3MPa
Guns number (Optional)	1-3pcs
Treatment Range of each Gun	≤110mm
Conveyor Belt Speed	0-30m/min
Conveyor Belt Width	400mm
Dimension	2200 (L) *900 (W) *2000 (H) mm
Weight	90kg



PL-B3150

▶ Online Plasma Surface Treatment System (automatic)



VL-10-A

Vacuum Plasma Surface Treatment System (10L)

▶ TECHNICAL PARAMETERS

Main System Power Supply	220 (1±10%) V (AC) 50-60Hz
Plasma Power Supply Frequency	RF 13.56MHz (300W)
Power	≤2.2kW
Working Vacuum	10-100Pa
Compressed Air	≥0.4MPa
O ₂ , AR, H ₂ , N ₂ , CF ₄ or other Process Gases	0.3-0.4MPa
Effective Treatment Area	220 (W) *210 (D) mm
Number Of Effective Processing Layers	1-3 layers (electrode plate layer spacing height 30mm)
Reaction Chamber	280 (W) *180 (H) *270 (D) mm
Dimension	550 (W) * 830 (H) *550 (D) mm
Weight	150kg

▶ TECHNICAL PARAMETERS

Main System Power Supply	380 (1±10%)V (AC) 50-60Hz
Plasma Power Supply Frequency	RF 13.56MHz (600W) /40kHz (1000W)
Power	≤3.5kW
Working Vacuum	10-100Pa
Compressed Air	≥0.4MPa
O ₂ , AR, H ₂ , N ₂ , CF ₄ or other Process Gases	0.3-0.4MPa
Effective Treatment Area	390 (W) *335 (D) mm
Number Of Effective Processing Layers	1-8 layers (Standard 3 layers, electrode plate layer spacing height 45mm)
Reaction Chamber	450 (W) *420 (H) *465 (D) mm
Dimension	1050 (W) *1775 (H) *915 (D) mm
Weight	450kg



VL-80-A

▶ **Vacuum Plasma Surface Treatment System (80L)**

